

Let the Fresh Air In...



...Keep Bugs Out!



PRODUCT ADVANTAGES

- ✓ Provides excellent ventilation and cooling
- ✓ Keeps insects out
- ✓ Easy to install, remove, and reuse
- ✓ Available in sizes to fit standard one-car or two-car garages

EACH PACKAGE INCLUDES

- ✓ Garage screen curtain, choice of :
One-car size: 90\"/>
- ✓ 20\"/>
- ✓ Wood screws
- ✓ 10 Adhesive hook tabs

The Garage Screen Curtain is a weighted fiberglass mesh curtain that can be hung in garage door openings. It allows you to enjoy fresh air in the garage while minimizing the presence of bothersome flying pests like bees, moths, mosquitos and flies.

It's a **collapsible temporary screen door for your garage** without the inconvenience and expense of a permanent installation. It is **easily installed in just a few simple steps** with an innovative hook-and-loop mounting panel system.

The Garage Screen Curtain is also reuseable. It can be removed, repositioned and adjusted, if necessary. **It's a great product for the do-it-yourselfer.**

INSTALLATION INSTRUCTIONS

TOOLS REQUIRED

✓ Screwdriver ✓ Pencil ✓ Bubble level (Optional)

STEP 1

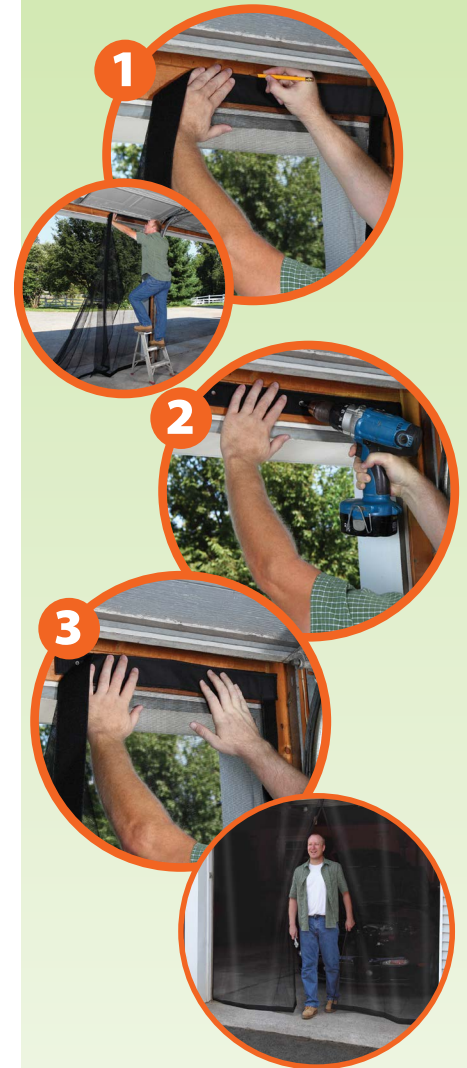
Unfold garage screen and hold against door frame to determine best height position to attach mounting panels. Hold the unfolded screen against the inside top left corner of the door frame. Move up or down to allow the screen to hang straight and barely touch the ground. Using a pencil, mark the position of the top of the screen on the door frame. Repeat at top right corner and then evenly spaced across the top.

STEP 2

Screw the mounting panels above the door opening with the fastener side out. Align the top of a mounting panel to the top left pencil mark from step 1. The mounting panel should be positioned horizontally above the door with the left side of the panel lined up with the left of the door frame. For best results, use a bubble level to make sure it is straight. Screw the mounting panel into the top of the door frame. Repeat with the right panel lined up with the right side, and the center panel aligned to the center.

STEP 3

Attach top of the garage screen to the mounting panels with the built-in hook and loop fasteners. Remove and reposition as needed for best coverage of the door opening. The hook and loop fasteners allow for easy removal of the curtain when you wish to take it down. (Optional: Use included adhesive tabs to stick the sides of the curtain to the door frame. This is unnecessary unless you are expecting windy weather that could blow the garage curtain open.)



PRODUCT INFORMATION

Product Number	UPC	Product Description	Product Dimensions	Weight	Case Pack	Case UPC	Case Dimensions	Case Weight	Units/Pallet
FSP8590-U	0 11646 73081 7	1-Car Garage Screen Curtain, EN/SP	90"Hx114"W	5.8 lb	3	1 00 11646 73081 4	10.5"x25.25"x15.25"	17.3 lb	120
FSP8591-U	0 11646 73082 4	2-Car Garage Screen Curtain, EN/SP	90"Hx202"W	9.8 lb	2	1 00 1164673082 1	10.25"x30.25"x15.25"	19.7 lb	70
FSP8592-U	0 11646 73098 5	1-Car Garage Screen Curtain, EN/FR	90"Hx114"W	5.8lb	3	1 00 11646 73098 2	10.5"x25.25"x15.25"	17.3 lb	120
FSP8593-U	0 11646 73099 2	2-Car Garage Screen Curtain, EN/FR	90"Hx202"W	9.8lb	2	1 00 11646 73099 9	10.25"x30.25"x15.25"	19.7lb	70

www.adfors.com

SAINT-GOBAIN ADFORS America, Inc.
1795 Baseline Road
Grand Island, NY 14072
USA
Phone: 800-762-6694
Fax: 716-775-3902

Follow us on:



www.newyorkwire.com

NEW YORK WIRE

Visit www.newyorkwire.com to learn more about our products, view our how-to videos and our screen selector tool to make sure you have the right screen for your needs.