



FibaLath™ Installation Instructions

Compatible with stucco, stone and brick veneer

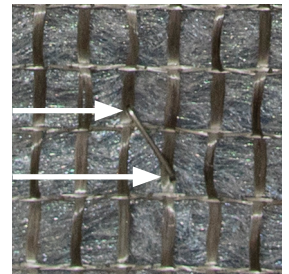
INSTRUCTIONS:

FibaLath should be installed over a moisture barrier. Unroll across surface and cut to size using a utility knife or large shears. FibaLath can be placed vertically or horizontally.



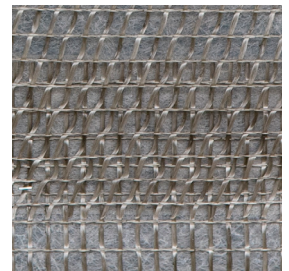
Attach FibaLath with recommended fasteners depending on framing structure.

Wood framing - Use 3/4" crown x 1.25" 16 gauge staples engaging at least 2 strands of lath. Staples should be fastened to framing 16" on center, no more than 7" apart.

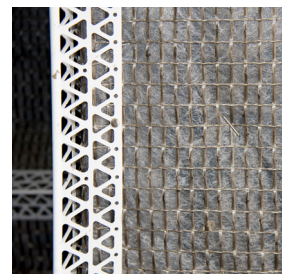


Metal framing - Use #6 x 1.25 in Type S 0.32 in-dia. head screws, or 1.25" x .10 diameter VersaPIN Gripshank fasteners, with 1.25 in Wind-Lock Lath plates (legless), spaced 16" on center, no more than 7" apart.

FibaLath should be installed with a minimum 3" overlap across seams.



For inside and outside corners attach a casing or corner bead over FibaLath using manufacturers recommended fasteners.




SAINT-GOBAIN

**SAINT-GOBAIN ADFORS
America, Inc.**

1795 Baseline Road
Grand Island, NY 14072 - USA
Phone: 800-762-6694
Fax: 716-775-3902
www.adfors.com

MADE IN THE
USA 